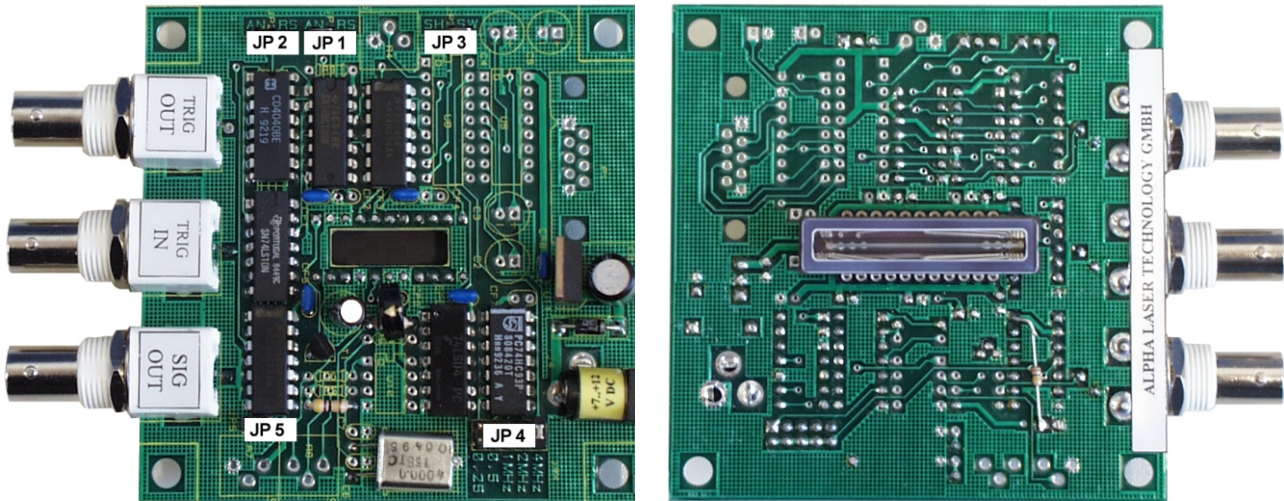


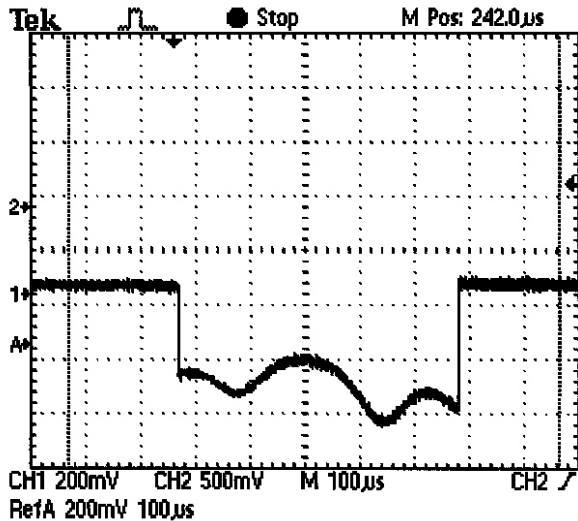
## *HIGH-SENSITIVITY CCD-ARRAY CCD-2000M*



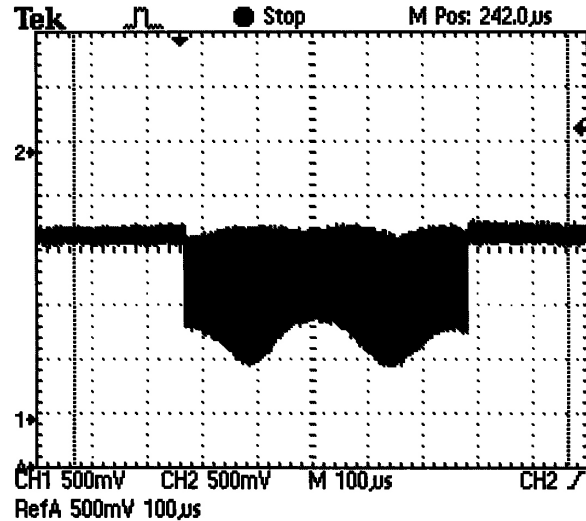
Advanced high-sensitivity CCD-array complete with driving electronics offers a cost-effective solution to light-measurement applications. The CCD-2000M model uses a pixel length of 200  $\mu\text{m}$  in order to achieve high sensitivity. The driver electronics features a simple plug&play design. The device can be connected directly to an oscilloscope or to a computer with a suitable analog-to-digital converter.

The CCD-2000M arrays find numerous applications in beam profile and  $M^2$  measurements, single-shot autocorrelators, spectroscopy, etc.

## HIGH-SENSITIVITY CCD-ARRAY CCD-2000M



**SAMPLE&HOLD MODE**



**SWITCHED MODE**

**Technical Specifications:**

Number of pixels:	2048
Pixel size:	14x200 $\mu\text{m}$
Pitch:	14 $\mu\text{m}$
Spectral range:	250 nm - 1100 nm
UV Option:	190 nm - 1100 nm
Supply voltage/current:	+7.5V to +12 V DC / 100 mA
Trigger input:	+ 5 V (TTL) rising edge
Scan (clock) frequency:	0.25 - 0.5 - 1.0 - 2.0 - 4.0 MHz
Repetition rate (auto mode):	70 - 140 - 280 - 555 - 1116 Hz
External triggering rate:	0 - 1116 Hz, arbitrary adjustable
Trigger output:	+5 V TTL
Output signals:	
- zero light level:	+ 3.5 V
- saturated level:	+ 1.2 V
Dynamic range:	>600
Output signal modes:	Sample and Hold / Switched
Dimensions, mm (excl. BNC):	86x86x26 mm

***Ready to use, plug&play***

**ALPHALAS GmbH**

Bertha-von-Suttner-Str. 5, D-37085 Göttingen, Germany

Tel.: +49-551-7706147, Fax: +49-551-7706146, E-mail: sales@alphalas.com, Web-Site: www.alphalas.com